

PI3000

PASSENGER INFORMATION SYSTEM



User Guide

PLEASE READ THIS FIRST!

Insurance

The security dongle has significant value and is the key to your system and your charts. It is not possible to replace lost or stolen dongles without charge for the FULL replacement value of both software and charts. **YOU MUST MAKE SURE THAT YOUR DONGLE IS INSURED AGAINST THESE RISKS.**

This Manual

This manual has been designed to get you up and running with the basic functions of PI3000.

It is designed to run in conjunction with the tutorials and help files within PI3000 and the technical helps to be found on our web site (www.euronav.co.uk) that deal with some of the more advanced functions.

Please use the manual, help and website files before contacting us.

For the use of this system a general knowledge of PCs and their operation is assumed. For information about the operation of your PC and its capabilities please refer to a PC specialist.

Contents

		Page
1	Installation and set up	4
2	Launching PI3000	5
1.1	Setting up the Monitors	5
1.2	Quick Launch Panel	5
3	Slide Show	6
2.1	Creating a Slide	7
2.2	Editing a Slide	7
2.3	Editing a Slide Show	7
4	Voyages	8
3.1	Creating a Voyage	9
3.2	Editing a Voyage	9
5	Routes, Simulator and Testing	10
4.1	Setting a Route	11
4.2	Simulator	11
6	Ticker Tape	11
7	Measuring	12
8	Using Charts	13
9	Troubleshooting	14

Technical Support

Additional information can be found in help files within the PI3000 program (accessed via the **Help** menu).

Please visit our website regularly for updates and product information.

1 Installation & Set Up

Please see the *PI3000 Quick Start Guide* for information on installing the system and charts. Setting up the NMEA connection to the ships instruments is also covered here

2 Launching PI3000

After installing PI3000, a shortcut will be placed on the desktop. Run PI3000 by double clicking this

2.1 Setting up the Monitors

The Passenger Information display is designed to use the whole of the final display screen. To setup the monitors to display your presentation select the **Configuration** menu and select **Monitor Setup...**

From the **Output monitors** dialog that appears select the appropriate resolution for the slide show screens.

You can also use this dialog to enable the slide shows to appear on a different monitor from that being used to set up the PI3000. It is recommended to use a secondary monitor like this as this allows slides and other functions to be updated without having to close the slide show.

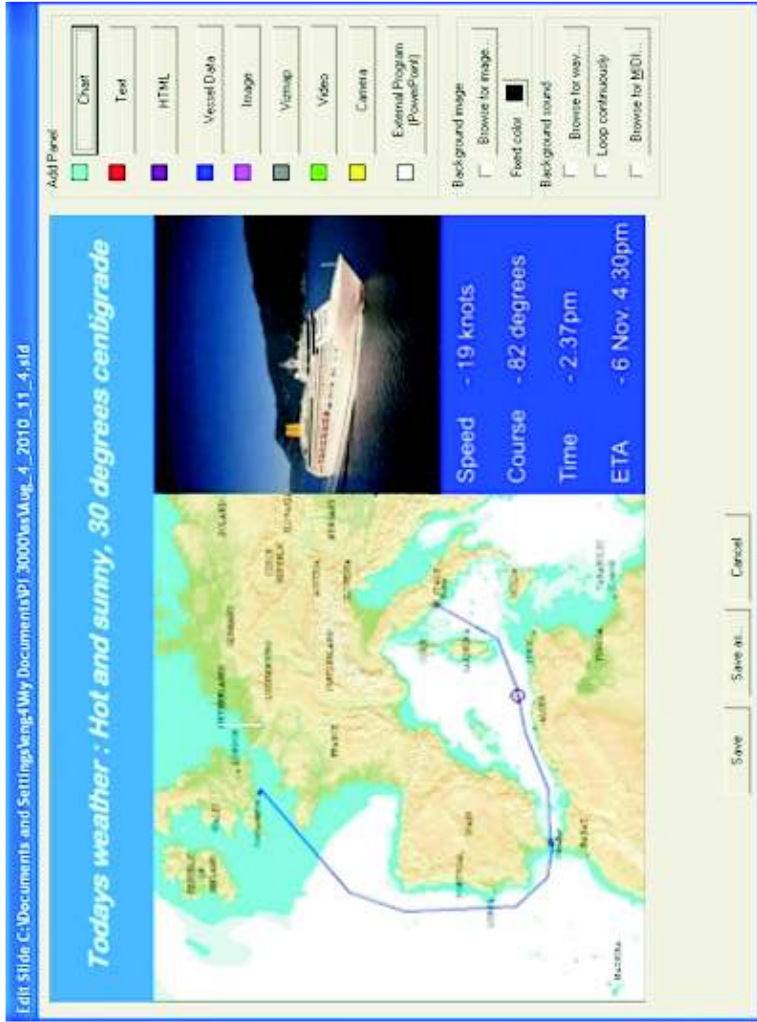
2.2 Quick Launch Panel

The first screen that comes up when starting PI3000 is the Quick Launch Panel. This panel allows the user to quickly select a pre-made slide, slide show or voyage.

If the Panel does not show it can be show by going to **Configuration** menu and clicking **Show Quick Launch Panel**.

To customise the Quick Launch Panel, go to the **Configuration** menu and select **Edit Quick Launch Panel**. Click **Setup** and choose the relevant files.

Ensure the '**Show Quick Launch Panel on Start**' is ticked for this to appear on program start.



Screenshot showing the Workspace and different Panel options

2 Creating a Slide Show

Go to the menu bar at the top of the page and click '**Slide show**': '**New**'.

Choose a place to save the slideshow, title it, click 'Save'.

A new window will open titled '**Edit slide show**'.

2.1 Creating a New Slide

Click '**Create new slide**'

Choose a place to save the slide, title it, click 'Save'.

2.1.1 A window will open titled '**Edit Slide**'. This window has the different Panel options to the right and a blank, black workspace. When adding a Panel, it will be added to the black workspace. This Panel can be resized: by dragging the edge of it; moved: by clicking & dragging the centre; edited: by double clicking in the centre of the Panel.

2.1.2 Notes on the different Panel options

Chart - When adding a Chart Panel to the work space and editing it, a new window will open allowing the user to scroll and move around the installed charts to show the desired area. When finished, click 'Save'.

Video - To embed a video in a slide, an '.avi' file must be used. It is also possible to embed an audio file, this must be a '.wav' file.

When the slide is finished, click 'Save' and the user will be returned to the '**Edit Slide Show**' window.

Repeat 2.1 until all sides are complete.

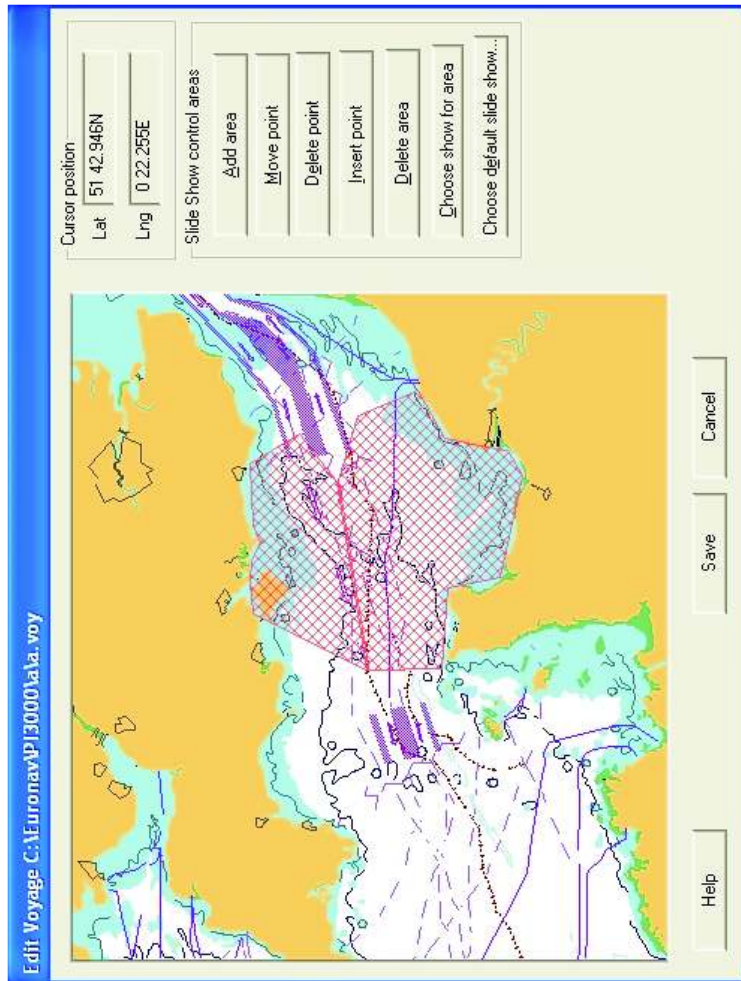
2.2 Editing a Slide

Click 'Slide' then 'Open/Edit' and follow section 2.1.1.

2.3 Arranging Slides

In the '**Edit Slide Show**' window, slides can be re-arranged by click and dragging the title up and down. The duration of the slide can be set by adjusting the duration time located under 'Duration' (hh:mm:ss).

Once finished, click 'Save' and the user will be returned to the 'Pre-



Screenshot showing the Workspace and Panel options

3 Voyage

3.1 Creating a Voyage

Click 'Voyage' then 'New'

Give the Voyage a '**File Name**' and click '**Open**' or if a Voyage has already been created, select the one required.

3.1.1 A window will open titled '**Edit Voyage**'. Here the user can set the location at which the slide or slide show will change.

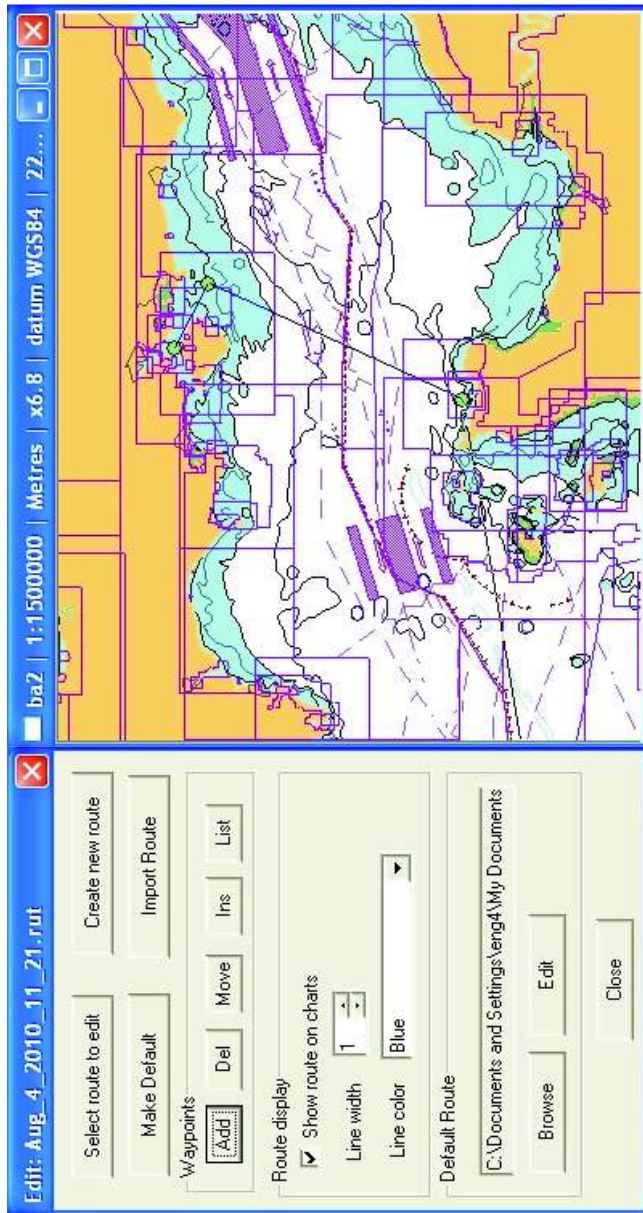
Zoom and move around the chart* and once in the desired area click '**Add Area**'. A different cursor will show and simply left click around the area you want a slide or slide show to appear on your screens and when finished right click. Now click '**Choose show for area**' and select the red hatched area with a left mouse click then right mouse click to bring up a new window. Here the user can select either a slide or slide show for the 3 options displayed.

** Familiarize yourself with the mouse gestures outlined on Page 11.*

The '**Choose default slide show...**' is what will be displayed when no slide or slide show is configured to run outside of the 'areas'.

3.2 Editing a Voyage

Click 'Voyage' then 'Edit' and follow 3.1.1.



Screenshot showing the Route Toolbar and Chart Window

4 Routes, Simulator and Testing

4.1 Setting a Route

Open a new chart window: **'Chart Utilities': 'New Chart Window'**.
Navigate into the desired area where the vessel will be sailing.
Start a new route: **'Configuration': 'Routes': 'Route Tool'**.
A window will appear. Click 'Create new route', title the file name, choose a directory to save it and click 'Save'

A crosshair will now appear on the cursor meaning when the mouse is clicked on the chart, waypoints will be laid. It is these waypoints that the Simulator will follow. Once the basic waypoints are laid, a right mouse click will bring the mouse back to its normal function. The waypoints they can be moved, inserted, deleted and added using the buttons in the Route window.

4.2 Simulator

Bring up the simulator window: **'Configuration': 'Simulator'**. In this window a number of parameters can be set.

To turn the simulator on, tick the box at the bottom right of the window titled 'Simulation On' and ensure 'Follow Route' is checked. The simulator will then follow the waypoints set in the route.
To move the vessel to the correct starting point click 'Set Vessel Position' then click on the chart where the vessel should be.

After all changes to the window have been made, click 'Apply' then 'Close'.

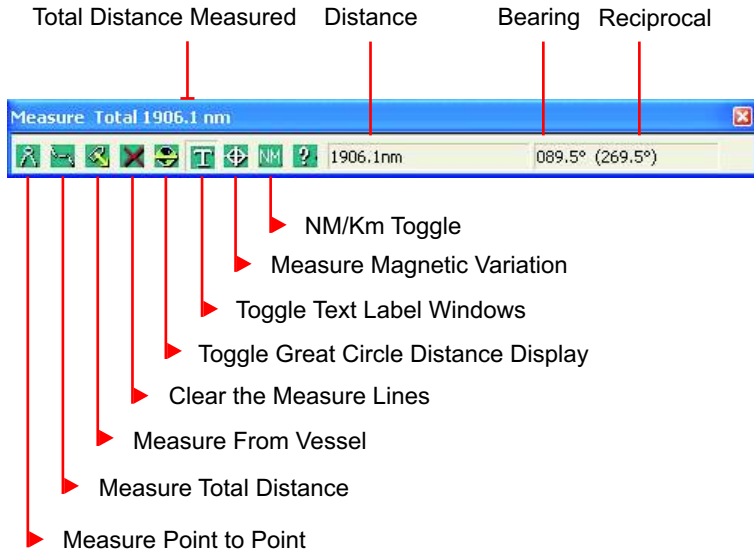
To test that the slideshow runs properly and that the correct slides appear at the right time and place, go to 'Voyage' menu and click 'Run'

5 Ticker Tape

This is a line of text that scrolls either above or below the slideshow. This can be set and edited via the **'Ticker Tape'** menu.

6 Measuring

Within a chart window, the Measure toolbar can be used to measure distances from point to point or for a total distance over many points.



To measure select the appropriate measure tool (**Measure**, **Measure total distance**, **Measure from vessel** etc.). Your mouse pointer should then turn into a 'cross hairs' when moved over the chart window. Left click to place points and if using **Measure Total Distance** right click to finish.

The information on your screen can be toggled on and off using the **Toggle Text Label** button.

To measure a great circle first put in a normal point to point measure then click on the **Toggle Great Circle Distance Display** button


Magnetic variation can be seen by clicking on the **Measure Magnetic Variation** button and clicking any chosen point within the chart window.

7 Navigating the Charts

Navigating around the Charts is easy and intuitive. Some of the main functions include zooming in and out and route tools that, along with other functions, are reached through the toolbar or icons around the main chart window or by using the mouse.

Zooming In and Out

seaPro Lite allows you to zoom into the area you have defined, showing more detail and a clearer image (with vector charts).

Zoom In Hold  + Drag →

- 1: Hold down the left mouse button and draw a box by moving the mouse cursor up and right over the area of interest.
- 2: When you have outlined the area you want to zoom into, release the left mouse button.

Zoom Out



- 1: Click once over the chart window with the right mouse button and seaPro will zoom out one level.

Panning

- 1: Place your mouse cursor near the edge of the chart window in the direction you wish to pan, it will turn to a large blue arrow.
- 2: Left click when you see the large blue arrow to pan in that direction.

Chart Zoom Toolbar



- 6.1 'Chart Utilities': 'Show Chart Zoom Toolbar'. This provides an easy way to navigate around a chart.

8 Troubleshooting

Should you encounter any problems with the installation or use of PI3000, read through the following suggestions.

Technical support is available in the form of online help, within PI3000 (just click on **Help**, it's what it's there for), the technical pages on our web site (www.euronav.co.uk) or you can email us at: **techsupport@euronav.co.uk**

Make sure PI3000 is up to date with downloads from our web site: **www.euronav.co.uk**

PI3000 Restarts Unexpectedly

If PI3000 does not install properly, is slow to zoom and pan, crashes when you build folio or when a menu item is selected, etc, your computer may be at fault.

You may need to turn down (or switch off) your computers Hardware Acceleration to do this in Windows XP do the following:

- 1: Shut down all programs you may be running.
- 2: Right click the mouse on the desktop and select **Properties** from the drop down menu.
- 3: From the Display Properties window select the **Settings** tab.
- 4: Click the **Advanced** button.
- 5: Select the **Troubleshoot** tab from the windows that opens.
- 6: Adjust the **Hardware Acceleration** as desired then click **OK**.

Note: It is best to start with the Hardware Acceleration on the lowest setting.

These instruction may differ for Windows 2000, Vista or 7 in which case please contact your PC supplier for more information if required.

If this solves the problem then you have a bad or old graphics card driver on your PC. Contact your PC supplier or manufacturer for advice on possible updates and fixes.

Note: For a lot of programs the acceleration setting will make little difference to their PC performance

The ship isn't showing

This can be caused by:

- a) GPS incorrectly setup.
- b) seaPro incorrectly setup.
- c) GPS incorrectly wired to the computer.

How to rectify:

Find the interface or communications setup screen on your GPS. Ensure that the GPS is set to NMEA to NMEA. seaPro uses NMEA 0183, recommended baud rate 4800.

In seaPro go to **Setup**, then click **Serial Ports...** . Click on **AUTO SCAN** to locate the GPS and set its correct com port.

The Charts Can't be Seen

This is caused by either:

- a) Charts not being installed correctly
- b) Folio mode being turned off

How to rectify:

Make sure the charts have been installed then in seaPro click on **Chart** then **Folio**. Make sure the appropriate chart folder is ticked (if in doubt tick them all) and click **Create folio**. When done click **Close**. If your charts are still not visible to you click on the folio mode icon on the main toolbar (it should have a green dot in the corner).

The charts are almost black with text and detail

This is caused by:

- a) Auto-detail mode is switched off.

How to rectify:

Click on the Auto Detail icon on the main toolbar, it's the one that looks like a magnifying glass. In normal operation it will have a green dot in the corner.

