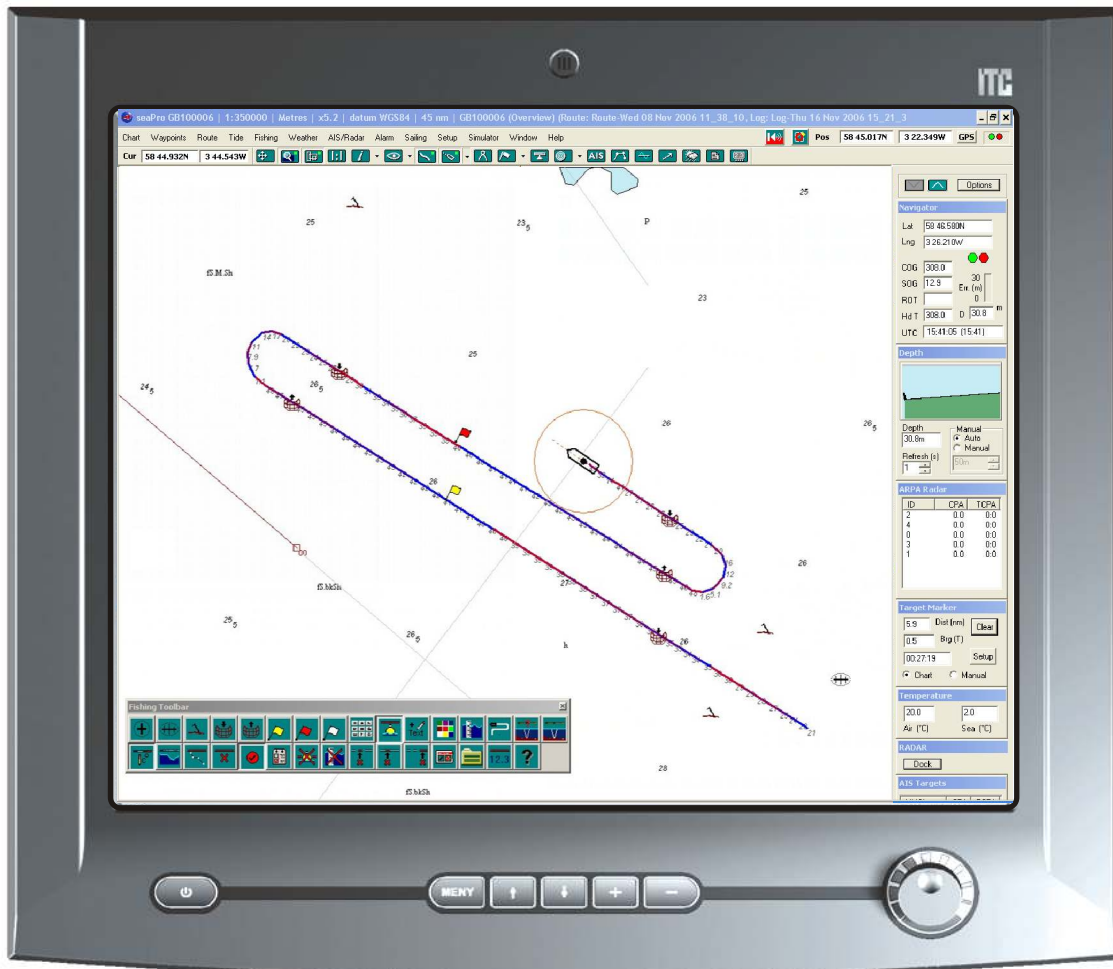


seaPro Fishing

Optimise your time fishing

Designed specifically for the fishing industry, seaPro allows you to optimise your time fishing by recording and displaying vital data to improve catches whilst highlighting areas that cause problems such as obstructions. Historical information including past tracks and activities can be viewed at the same time as the 'live' data. seaPro is dual purpose and can be used in navigation mode to get to a location as efficiently as possible, before switching to plotting mode when reaching fishing grounds.



seaPro Fishing showing the FishingToolbar, marker symbols and vessel track, shown coloured by depth

Key Features

- Easy to use - large floating toolbar
- Clear display of tracks, marks & catches
- Add your own symbols, text and areas
- Record bathymetric data to improve fishing accuracy and repeatability

Key Benefits

- Fish more productively
- Get to fishing grounds faster
- Record where best catches are
- Improve safety with radar & AIS targets
- Keep records of valuable fishing data

Fishing

Easy to use - the fishing toolbar provides access to all the major fishing functions. This offers clear large buttons that makes using seaPro Fishing simple and effective, even in the toughest conditions.

Add information - Quickly drop marker symbols, add text and mark areas. These can define fishing or no-go zones with notes and marks for catch recording or areas of special interest.

Display past tracks and catches - Any data recorded, including past tracks and catches can be displayed, so that you can easily analyse information or return to good fishing spots.

Tracks can be customised/ coloured by depth, water temperature or ground type (requires additional hardware) to easily highlight contours, holes or areas of special interest.

Unlimited data logging - Log as little or as much information as you like.

Bathymetric data collection - Spot depths and contours on charts can be added to by recording additional depth data either set by time or distance intervals.

Kingfisher database - Useful database from the UK Sea Fish Industry Authority shows positions of wrecks and other reported obstructions. Also included location of oil pipelines from UKOOA

Convert databases - convert fishing plans and data from other plotters and when upgrading from competitors software, saving the valuable data gathered over the years.

For further information on seaPro Fishing or other Euronav electronic charting and navigation products, please contact us or your nearest Euronav dealer:

Authorised Dealer

Navigation

Fishing Planning - seaPro enables real-time navigation with paper quality charts with the addition of powerful planning tools to enable you to get to your fishing spots as quickly and efficiently as possible. Tidal information is included to work out the most efficient routing.

Integrated Weather Information- Weather data from various official Meteorological Offices can be downloaded via the Internet and animated within seaPro to show up to 5 day weather forecasts. Information that can be displayed includes pressure, wind speed, wind direction, precipitation, sea surface temperatures and wave heights.

Charts - seaPro is a 'multi-fuel' platform that supports both Vector and Raster chart formats to provide the best choice of charts world-wide.

Vector charts; Livecharts and s57
Raster charts; ARCS, BSB, Seafarer and NZ mariner

Pre-selected areas- seaPro allows selected screen views to be saved and recovered, so you can quickly find and move to important or frequently visited spots.

Overzoom - This feature allows the user to zoom into a chart beyond the normal viewing level so is ideal for wreck fishing etc.

Logbook - seaPro keeps a log of navigation information that you can review or replay at a later date.

Route Planning & Marker Flag - Plan a route that takes into account tides or simply drop a marker flag to steer to. seaPro will also drive an autopilot

Radar targets - By interfacing to an ARPA radar with NMEA 0183 output, seaPro will display upto 32 tracked targets on the chart with vectors of their calculated positions based on their current speed and heading.

* An option to display AIS information further enhances safety to 'see' commercial vessels positions and details.

Euronav Navigation
20 The Slipway
Port Solent
Portsmouth
PO6 4TR
England
Tel: +44 (0)23 9237 3855
Fax: +44 (0)23 9232 5800
email: sales@euronav.co.uk
www.euronav.co.uk