

Relay switching option for PI3000 (using the Adam6060)

The relay switching option in PI3000 allows the user to trigger external events, such as an audio switch to play an announcement through a PA system or to switch on signs and lights.

Note: see the documentation supplied with the Adams6060 device for device specifications and switching loads/levels, in some cases additional power relays may be required.

More information is supplied with the Adams6060 on how to set up the switching device. You will need to know the fixed IP address for the Adam6060 on your own network when setting up in PI3000.

PI3000 controls the switching of the relay contacts via a hidden slide. Each of the slides can be used to set to open or close the individual relay contacts.

Requirements:

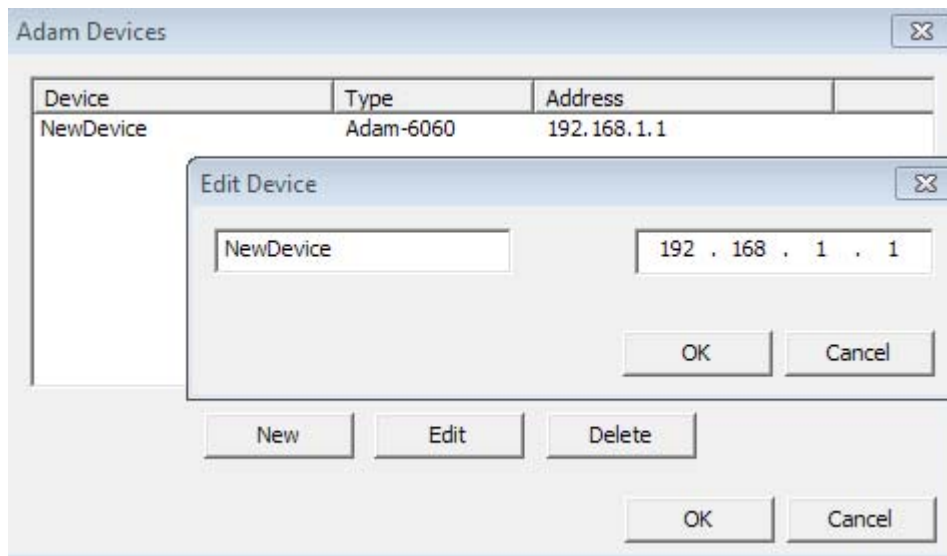
- Adam 6060
- PI3000 8.206 or higher
- Advantech Adam/APX utility (supplied with 6060 device)
- IP address of Adam 6060

PI3000 & Adam 6060 Set up:

1. Install the Advantech Utility program which is on the CD supplied with the Adam 6060.
2. Once the Advantech Utility is installed, connect the Adam6060 to a suitable power supply and connect the 6060 to your local area network via a route or network switch etc.
Note: Direct connection to a PC is possible, but the PC will need to be set up with a suitable static IP addresses etc.
3. Open the Advantech Utility and click Tools in the menu, then Search. The Adam 6060 will then show up under Ethernet. Alter the name and IP address as required, ensuring it doesn't conflict with other devices. You may need to enter a password for the device, the default is 00000000 (8 zeros). You can alter for improved security.

Use the utility to check that the relays are working. You may want to decide at this stage which relay channels you are going to use, and how they will be wired up. You can use the Advantech utility to check that the rest of the wiring/system beyond the 6060 relays is working correctly.

4. Within PI3000, select menu Configuration->Switching device setup.

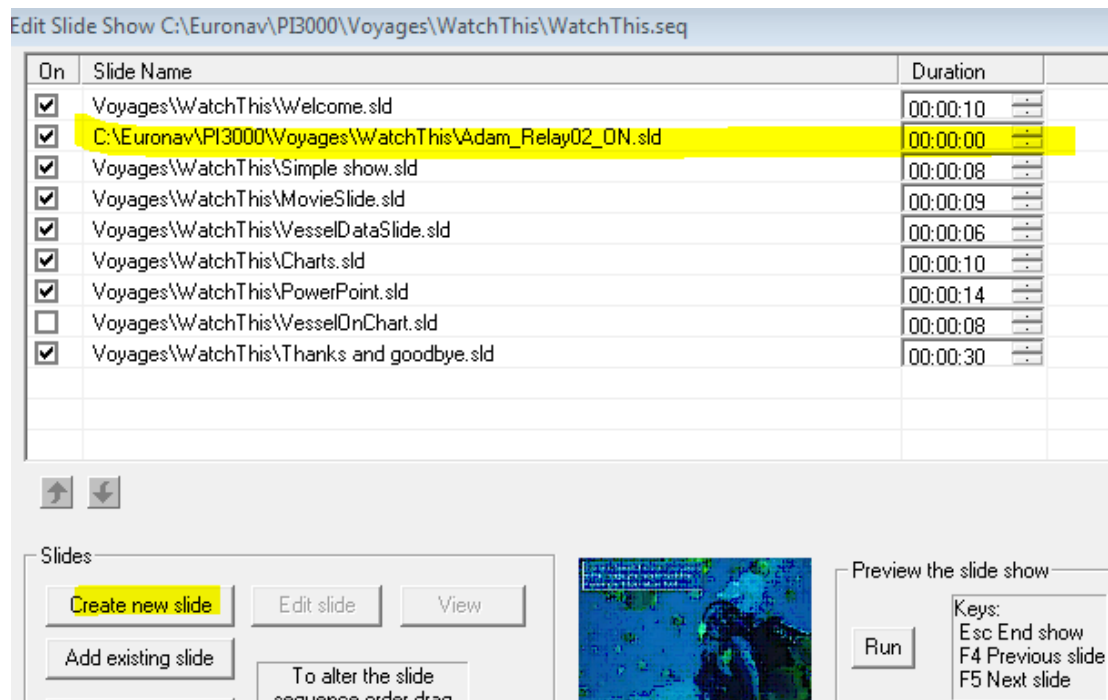


5. Assign a unique name for the device and enter the IP address determined by the Advantech Utility (Adam).

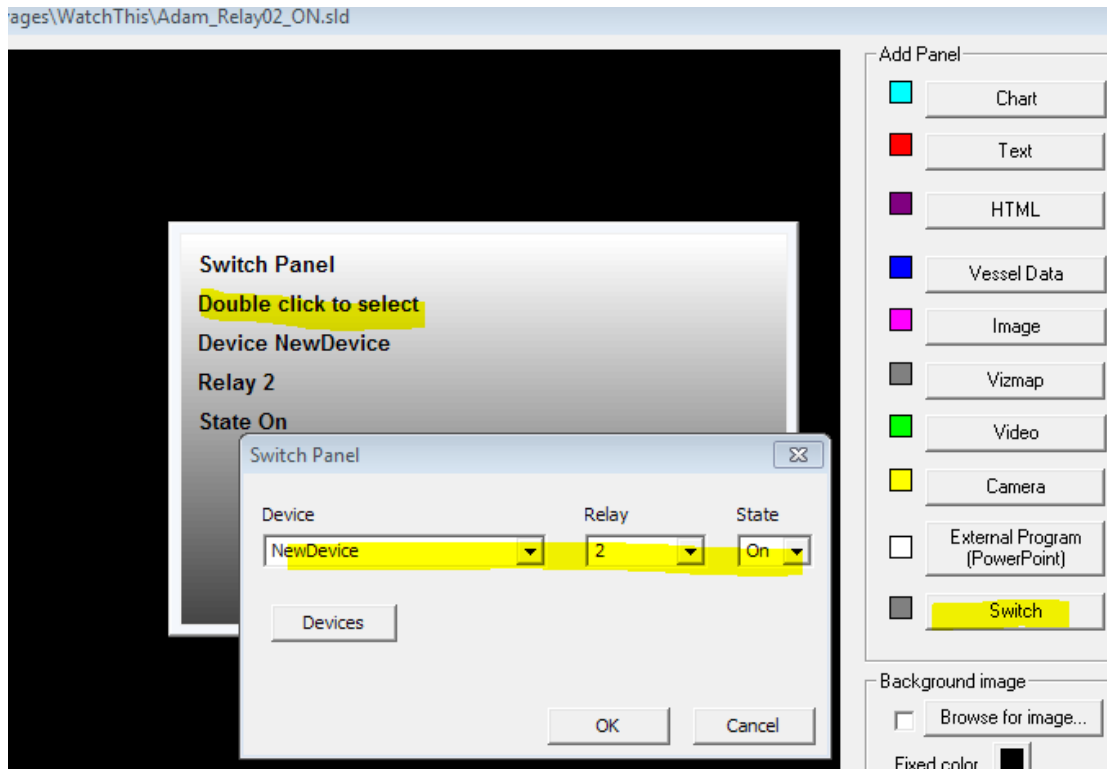
PI3000 & Adam6060 Controller:

The action of the Adam 6060 is controlled via the Switch panel within the slide edit tool.

1. Create a new slide and set the timer to 00:00:00. This will mean that the slide will not be displayed as part of the slide show, but will trigger the switching of the relays.



2. Select the Switch panel from the right and increase the size of it, to make the contents visible.
3. Double click the panel and modify the settings accordingly.



Here relay 2 has been set to switch on at this point in the sequence.

Note: As the Switch panel will not show on live slides, it is possible to add the Switch panel to an existing slide, however the panel will take up space on your slide.

4. Add another Switch slide to switch the relay off again at the right point in the sequence.

On	Slide Name	Duration
<input checked="" type="checkbox"/>	Voyages\WatchThis\Welcome.sld	00:00:10
<input checked="" type="checkbox"/>	C:\Euronav\PI3000\Voyages\WatchThis\Adam_Relay02_ON.sld	00:00:00
<input checked="" type="checkbox"/>	Voyages\WatchThis\Simple show.sld	00:00:08
<input checked="" type="checkbox"/>	Voyages\WatchThis\MovieSlide.sld	00:00:09
<input checked="" type="checkbox"/>	C:\Euronav\PI3000\Voyages\WatchThis\Adam_Relay02_OFF.sld	00:00:00
<input checked="" type="checkbox"/>	Voyages\WatchThis\VesselDataSlide.sld	00:00:06
<input checked="" type="checkbox"/>	Voyages\WatchThis\Charts.sld	00:00:10

Note: There can be up to two switch panels per slide, and a normal non-switch panel slide must separate slides with switch panels

End of document